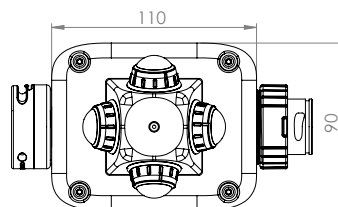
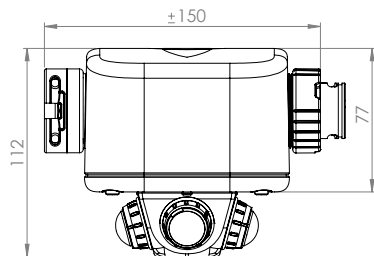


## AC TRONICS: MOTION DETECTOR OPEN AREA PIR SENSOR

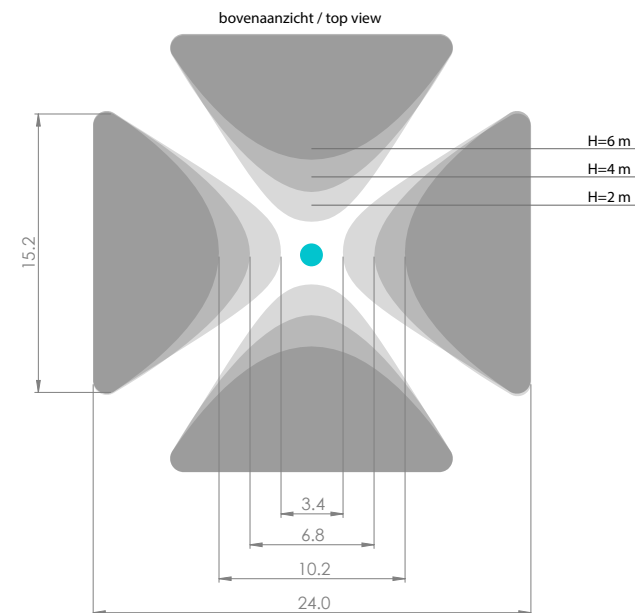
- The light line turns on when motion is detected. It is an energy-saving solution whereby no one has to think about turning off the lights.
- The switching direction of the sensor can be set separately. One is able to choose to keep one side constantly turned on and to let the other side switch on the basis of the sensor itself.
- The standby function gives you the option to switch off the lighting completely or to dim the lighting to 10% when there is no motion detection.



### Features

Input voltage	220 - 240 V <sub>AC</sub> , 50/60 Hz
Input power	max. 10 Watt
Type of sensor	PIR by Panasonic
Suspension height	2 - 6 meters
Dimensions (lxwxh)	110 x 90 x 112 mm
Time interval	5 sec. - 2,5 hours
IP class	IP54
Weight	360 g
Temperature range	-20°C ~ +40°C

article nr.: LUM-DL02AC-SNSR-PRNO



### Switching directions

Forward →  
Backward ←  
Both ↔

### Sync / Solo

Synchronize sensors  
or switch areas  
individually.

### Duration

5 sec - 2,5 hours

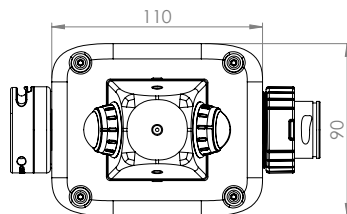
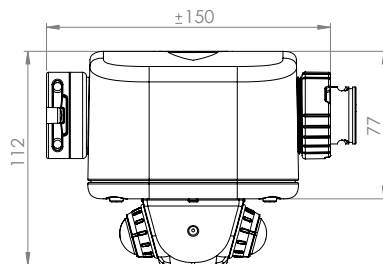


### Standby mode

Available positions:  
-0% / off  
-10%

## AC TRONICS: MOTION DETECTOR CORRIDOR PIR SENSOR

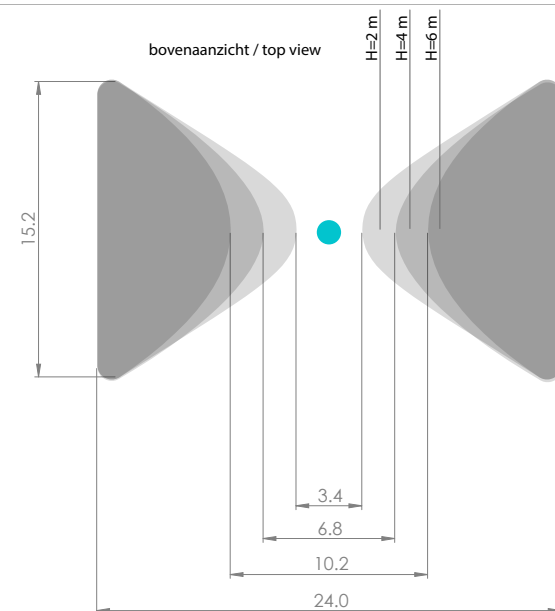
- The light line turns on when motion is detected. It is an energy-saving solution whereby no one has to think about turning off the lights.
- The switching direction of the sensor can be set separately. One is able to choose to keep one side constantly turned on and to let the other side switch on the basis of the sensor itself.
- The standby function gives you the option to switch off the lighting completely or to dim the lighting to 10% when there is no motion detection.



### Features

Input voltage	220 - 240 V <sub>AC</sub> , 50/60 Hz
Input power	max. 10 Watt
Type of sensor	PIR by Panasonic
Suspension height	2 - 6 meters
Dimensions (lxwxh)	110 x 90 x 112 mm
Time interval	5 sec. - 2,5 hours
IP class	IP54
Weight	350 g
Temperature range	-20°C ~ +40°C

article nr.: LUM-DL02AC-SNSR-PRNC



### Switching directions

- Forward →
- Backward ←
- Both ↔

### Sync / Solo

Synchronize sensors or switch areas individually.

### Duration

5 sec - 2,5 hours

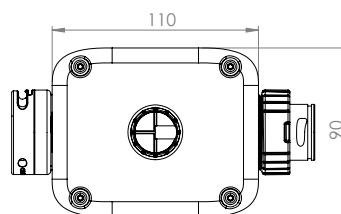
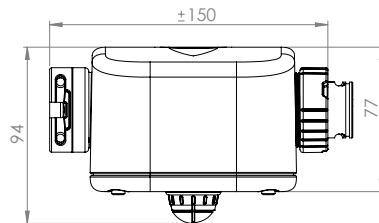
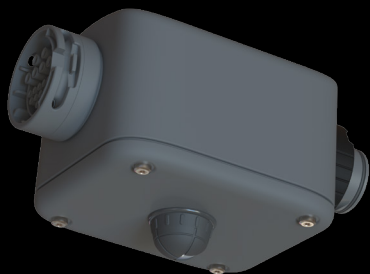


### Standby mode

Available positions:  
-0% / off  
-10%

## AC TRONICS: MOTION DETECTOR AISLE BEGIN PIR SENSOR

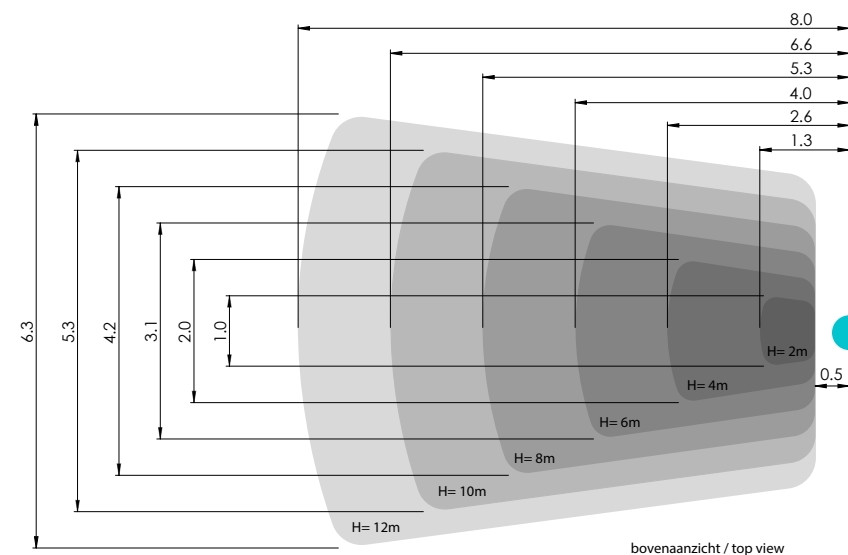
- The light line turns on when motion is detected. It is an energy-saving solution whereby no one has to think about turning off the lights.
- The switching direction of the sensor can be set separately. One is able to choose to keep one side constantly turned on and to let the other side switch on the basis of the sensor itself.
- The standby function gives you the option to switch off the lighting completely or to dim the lighting to 10% when there is no motion detection.



### Features

Input voltage	220 - 240 V <sub>AC</sub> , 50/60 Hz
Input power	max. 10 Watt
Type of sensor	PIR by Panasonic
Suspension height	2 - 12 meters
Dimensions (lxwxh)	110 x 90 x 94 mm
Time interval	5 sec. - 2,5 hours
IP class	IP54
Weight	330 g
Temperature range	-20°C ~ +40°C

article nr.: LUM-DL02AC-SNSR-PRNB



### Switching directions

- Forward →
- Backward ←
- Both ↔

### Sync / Solo

Synchronize sensors or switch areas individually.

### Duration

5 sec - 2,5 hours

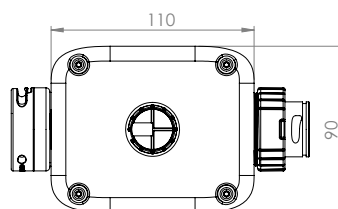
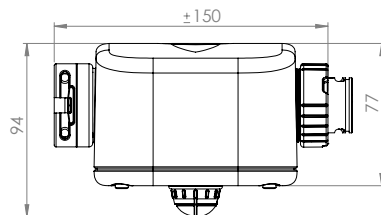
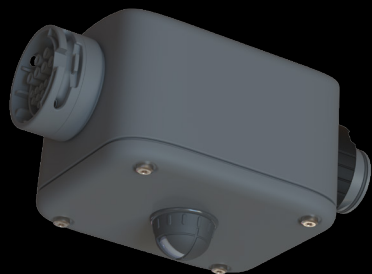


### Standby mode

Available positions:  
-0% / off  
-10%

## AC TRONICS: MOTION DETECTOR AISLE END PIR SENSOR

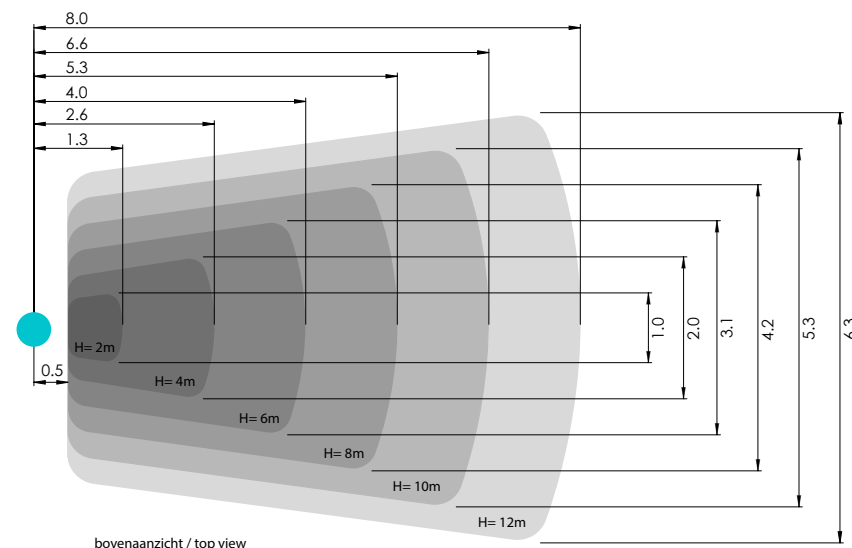
- The light line turns on when motion is detected. It is an energy-saving solution whereby no one has to think about turning off the lights.
- The switching direction of the sensor can be set separately. One is able to choose to keep one side constantly turned on and to let the other side switch on the basis of the sensor itself.
- The standby function gives you the option to switch off the lighting completely or to dim the lighting to 10% when there is no motion detection.



### Features

Input voltage	220 - 240 V <sub>AC</sub> , 50/60 Hz
Input power	max. 10 Watt
Type of sensor	PIR by Panasonic
Suspension height	2 - 12 meters
Dimensions (lxwxh)	110 x 90 x 94 mm
Time interval	5 sec. - 2,5 hours
IP class	IP54
Weight	330 g
Temperature range	-20°C ~ +40°C

article nr.: LUM-DL02AC-SNSR-PRNE



### Switching directions

- Forward →
- Backward ←
- Both ↔

### Sync / Solo

Synchronize sensors or switch areas individually.

### Duration

5 sec - 2,5 hours



### Standby mode

Available positions:  
-0% / off  
-10%