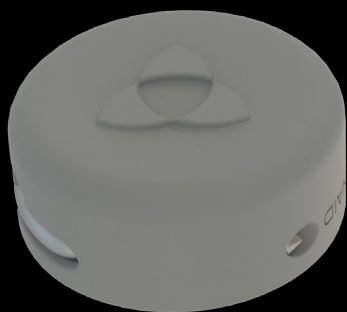


CONNECTS: PLUG.END

TERMINATION PLUG

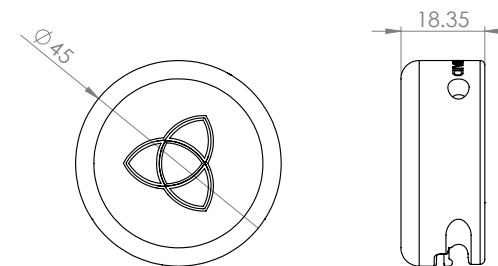
- PLUG.END is a plug used to end the light line and to ensure the safety and IP65 protection class of the lighting system.
- This product is only necessary when ending the line with a tronic instead of an end fixture.



Features

article nr.: LUM-LS01xx-END0-0001

Dimensions	18,35 x Ø45 mm
IP class	IP65
IK class	IK10
Material	PA
Temperature range	-40°C ~ +80°C
Weight	13 g



All products, product specifications and data are subject to change without notice to improve reliability, safety, function, design or otherwise.